

# 숙명여자대학교 무선네트워크 이용

- SMU 사용방법 -



디지털정보혁신처 디지털인프라팀

# 목 차

Win10	-----	04 - 09 PAGE
Win11	-----	11 - 16 PAGE
MAC OS	-----	18 - 24 PAGE
[모바일]안드로이드	-----	26 PAGE
[모바일]아이폰	-----	28 PAGE

# Win10 SMU 사용방법



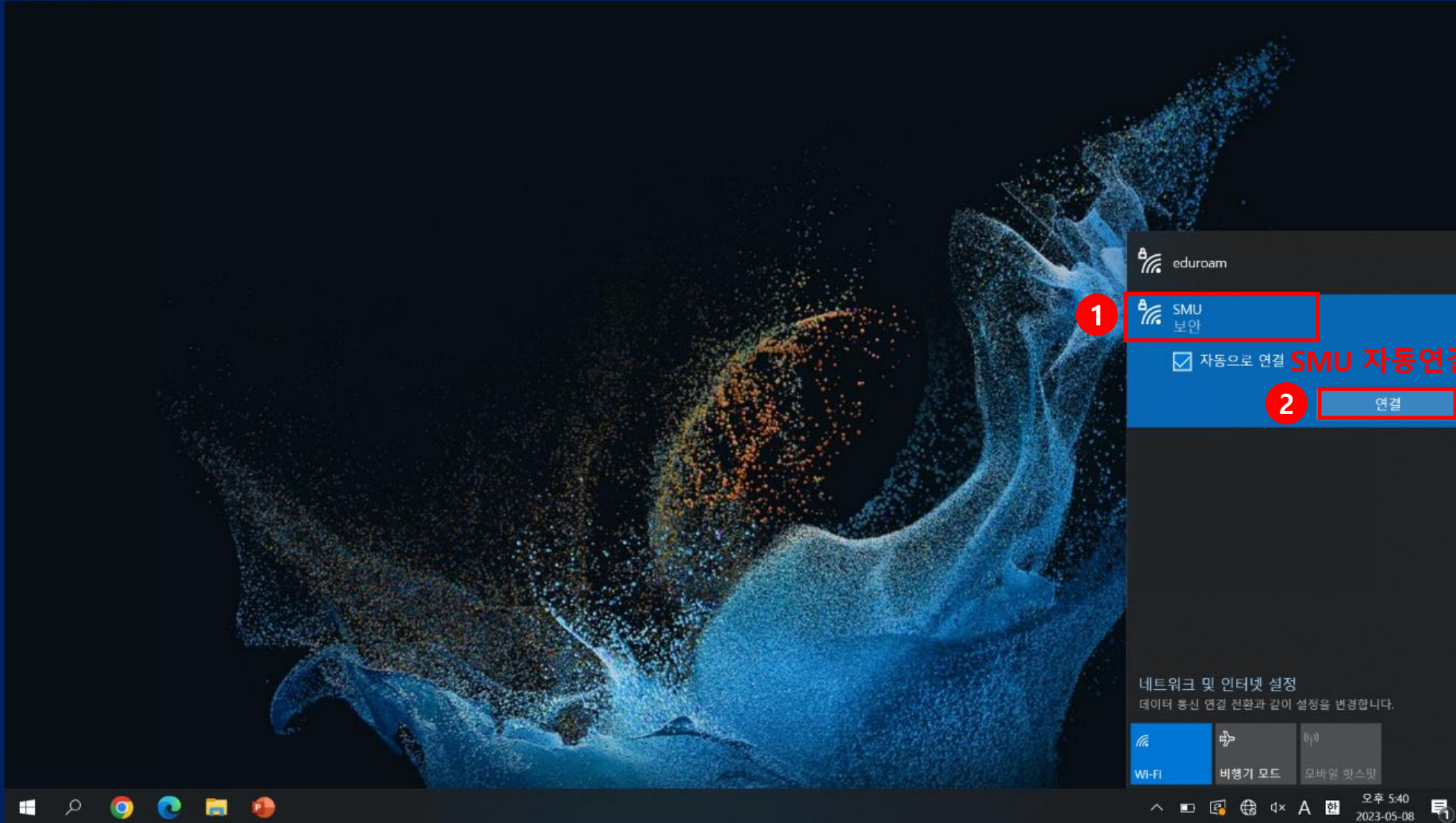
# SMU 사용방법 (Win10) - 1

1) 우측하단 지구본 모양  > Wi-Fi 활성화 > "SMU" 클릭





## 2) "SMU" > "연결" 클릭







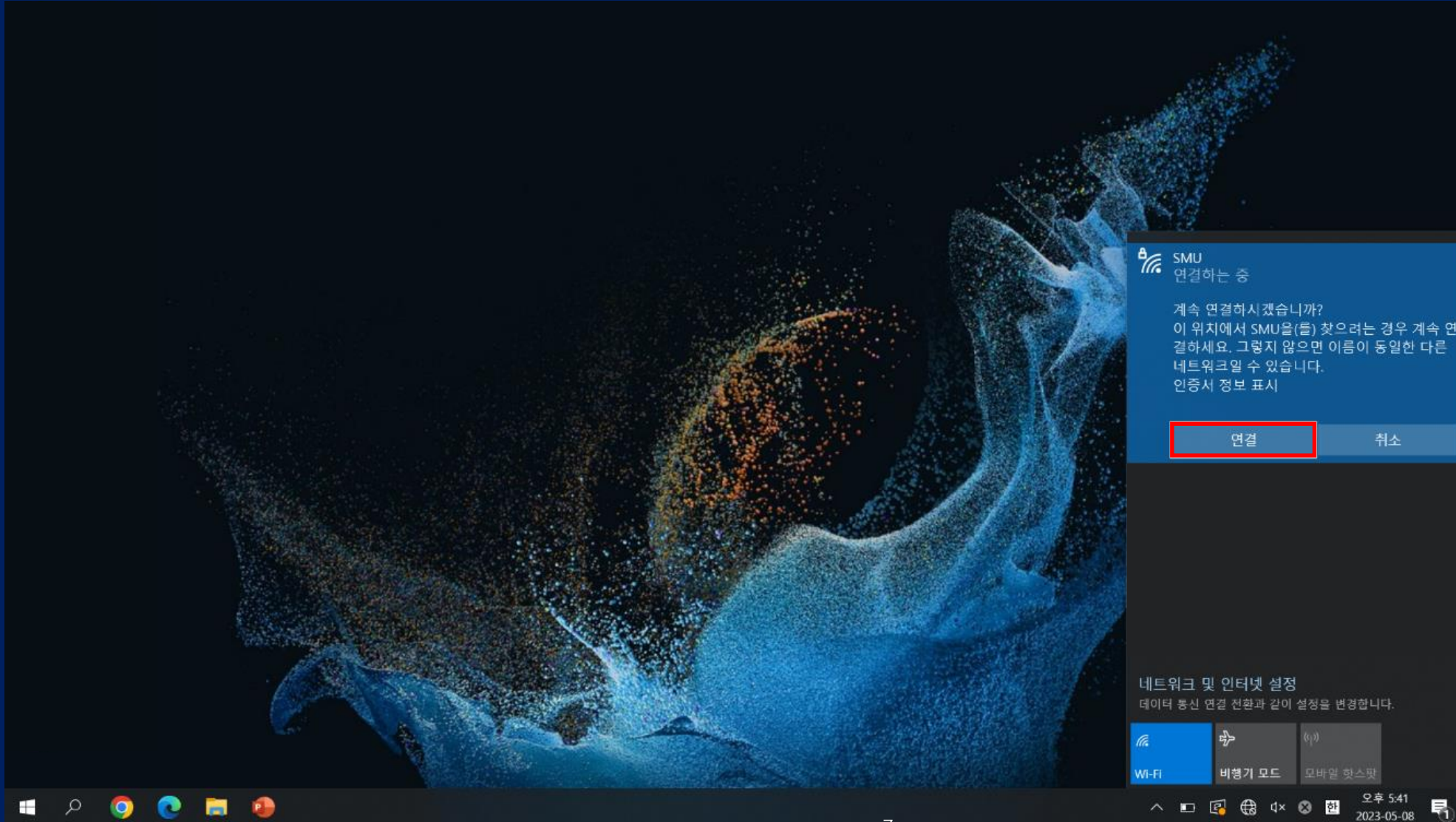
# SMU 사용방법 (Win10) - 3

## 3) 학번/교번 > 핸드폰 번호 > "확인" 클릭





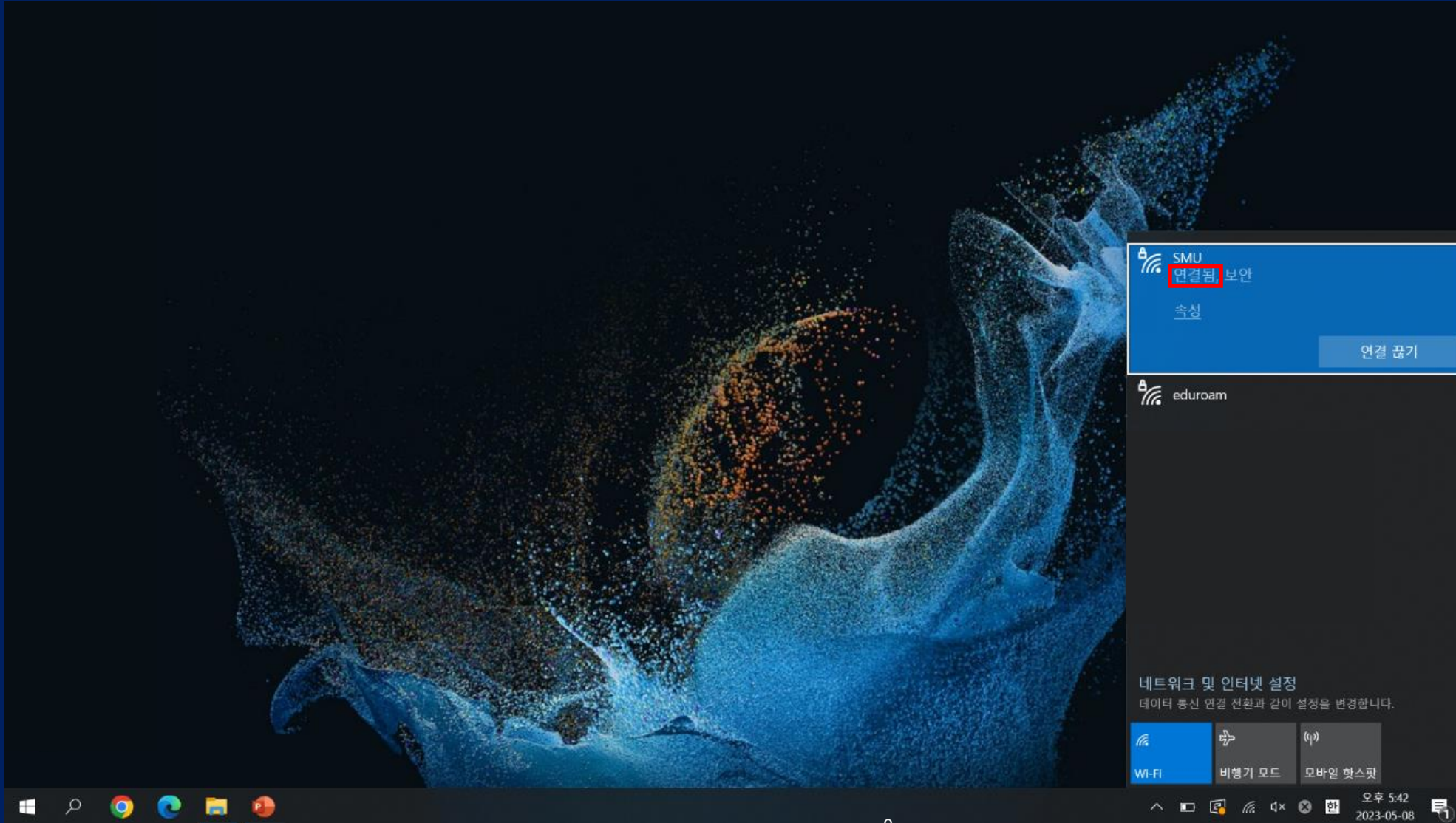
## 4) "연결" 클릭







## 5) "연결됨" 확인







# SMU 사용방법 (Win10) - 6

사용이 원활하지 않을 경우  
: SMU 삭제 후, 1)부터 다시 시행



SMU에서 마우스 우클릭

# Win11 SMU 사용방법



# SMU 사용방법 (Win11) - 1

- 1-1) 아이콘 우클릭 > 네트워크 및 인터넷 설정
- 1-2) 윈도우 key + i

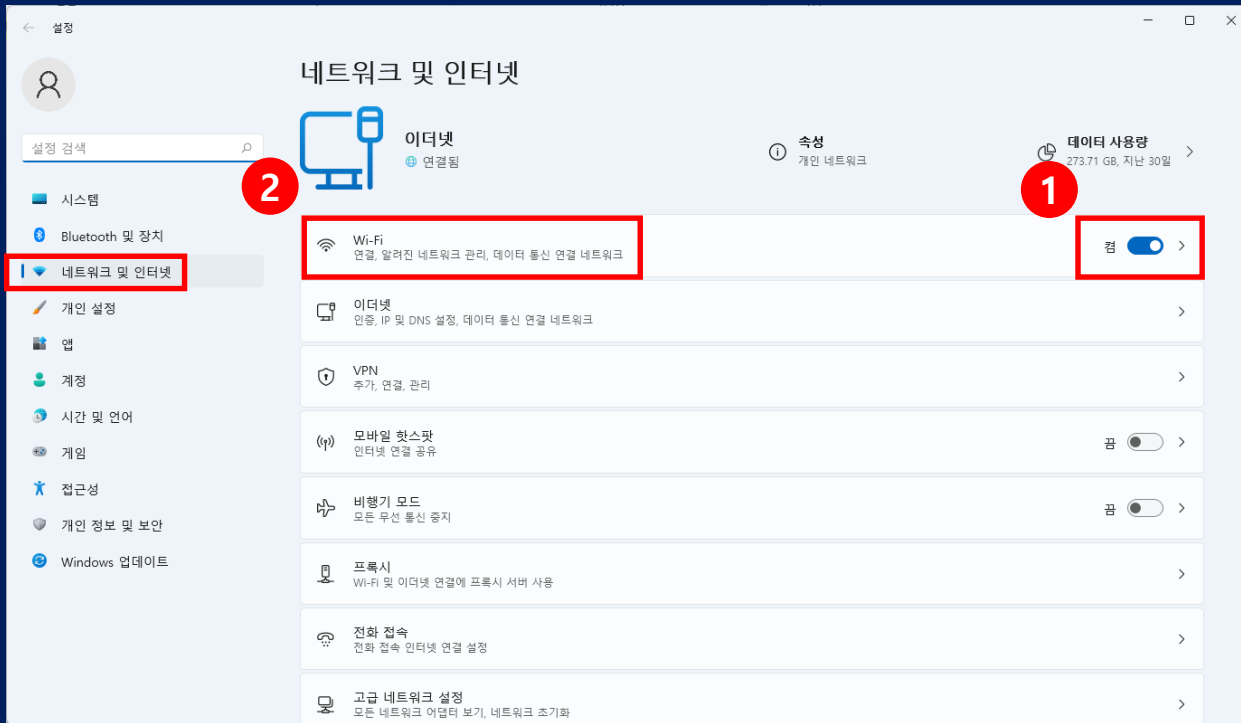
2

네트워크 및 인터넷 설정

1



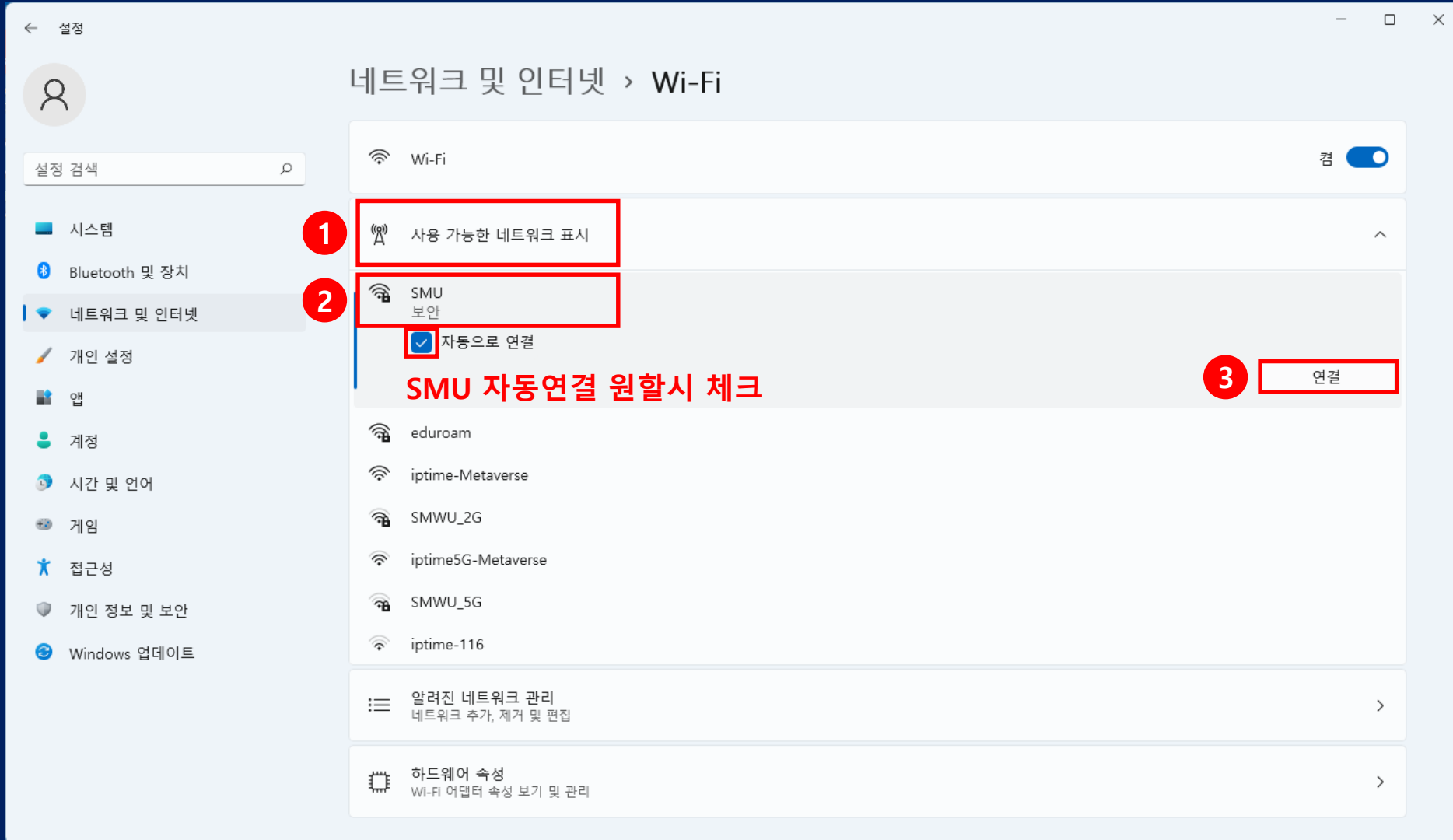
## 2) "컴" > "Wi-Fi" 클릭





# SMU 사용방법 (Win11) - 2

## 3) "사용 가능한 네트워크 표시" > "SMU" > "연결" 클릭







# SMU 사용방법 (Win11) - 3

## 4) 학번/교번 입력 > 전화번호 입력 > “확인” 클릭

The screenshot shows the Windows 11 Settings application, specifically the 'Network & Internet' > 'Wi-Fi' section. The 'Wi-Fi' toggle is turned on. Under 'Useful networks', the 'SMU' network is selected. The security settings for this network are displayed, showing the 'User name and password' section. The 'User name' field contains '학번/교번' (Student/Staff ID) and the 'Password' field contains '전화번호 / '-'없이' (Phone number / without '-'). A red box highlights the '확인' (Confirm) button at the bottom right of the security settings area.

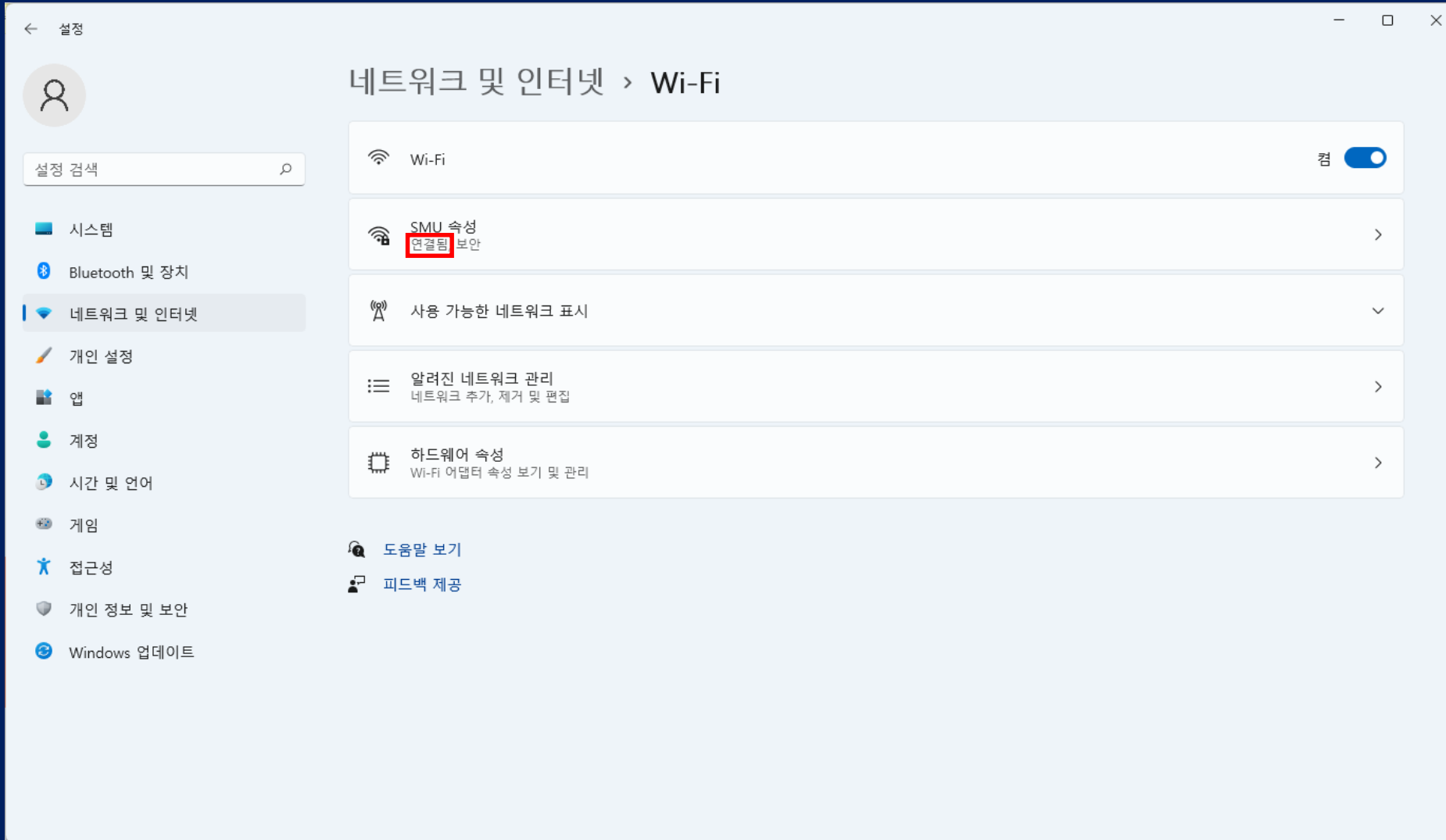


## 5) "연결" 클릭

The screenshot shows the Windows 11 Settings application, specifically the '네트워크 및 인터넷 > Wi-Fi' page. The left sidebar contains various settings categories, with '네트워크 및 인터넷' selected. The main content area shows the Wi-Fi toggle is turned on. Below it, there is a section for '사용 가능한 네트워크 표시' with a list of available networks. The network 'SMU 보안' is highlighted, and a dialog box asks '계속 연결하시겠습니까?' (Do you want to continue connecting?). The '연결' (Connect) button is highlighted with a red rectangle. Below this, other networks like 'iptime-Metaverse', 'iptime-116', 'SMWU\_2G', 'SMWU\_5G', and 'iptime5G-Metaverse' are listed. At the bottom, there is a link for '알려진 네트워크 관리' (Manage known networks).



## 6) "연결됨" 확인

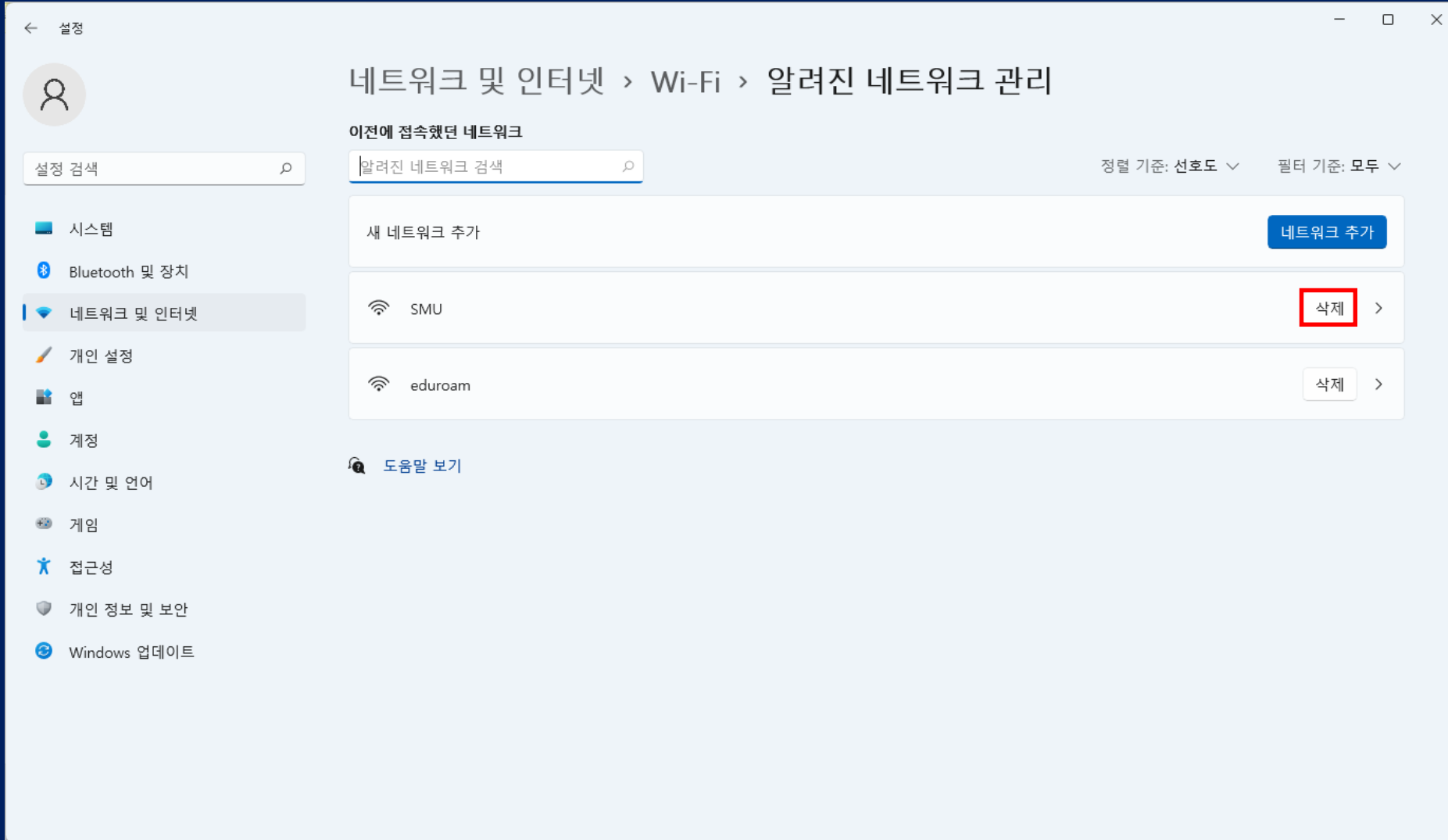




# SMU 사용방법 (Win11) - 6

사용이 원활하지 않을 경우

: 네트워크 및 인터넷 > Wi-Fi > 알려진 네트워크 관리 > "SMU" 삭제 > 1)부터 다시 시행





# MAC OS SMU 사용방법



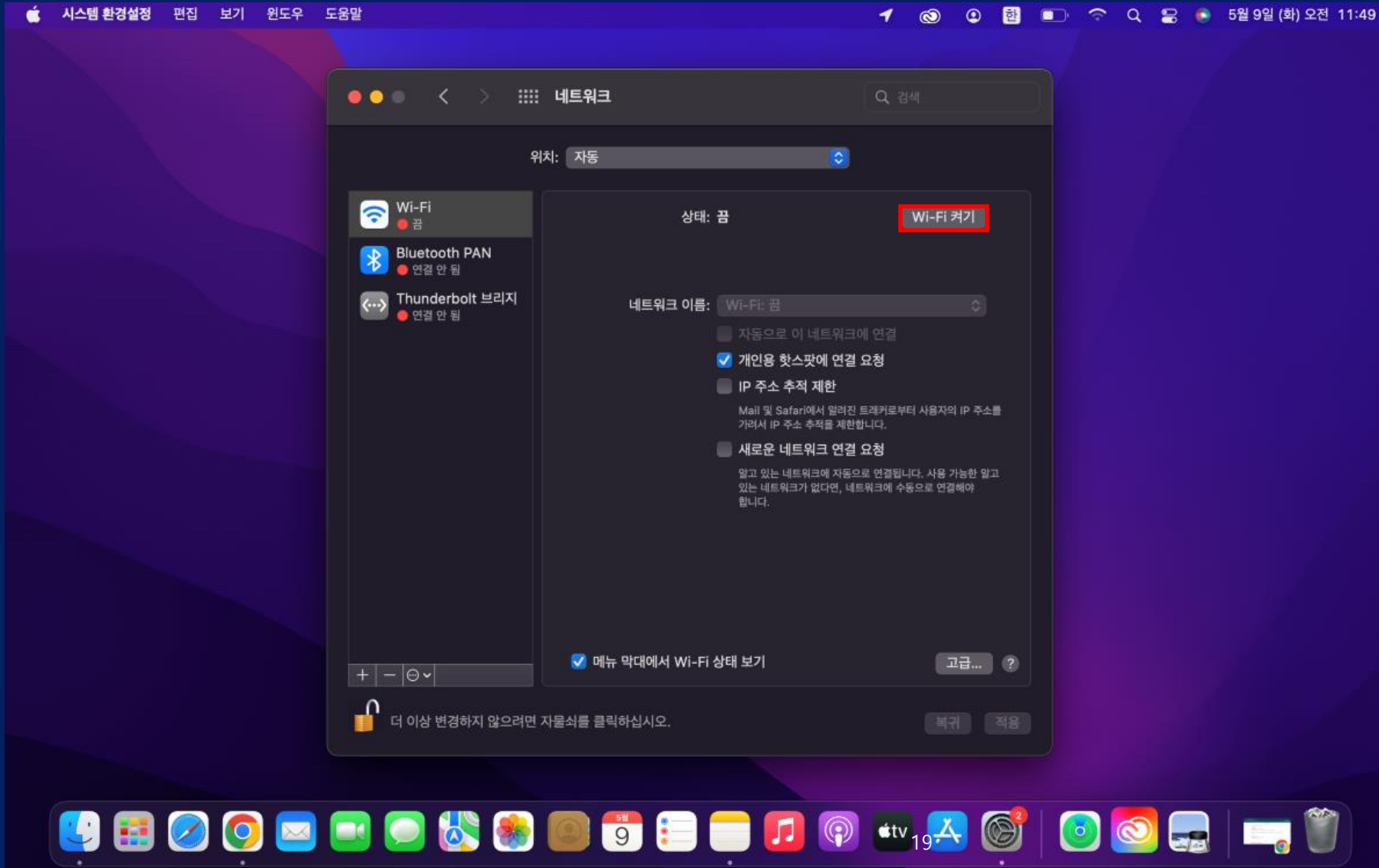
# SMU 사용방법 (MAC OS) - 1

## 1) 네트워크 - "네트워크 연결설정"



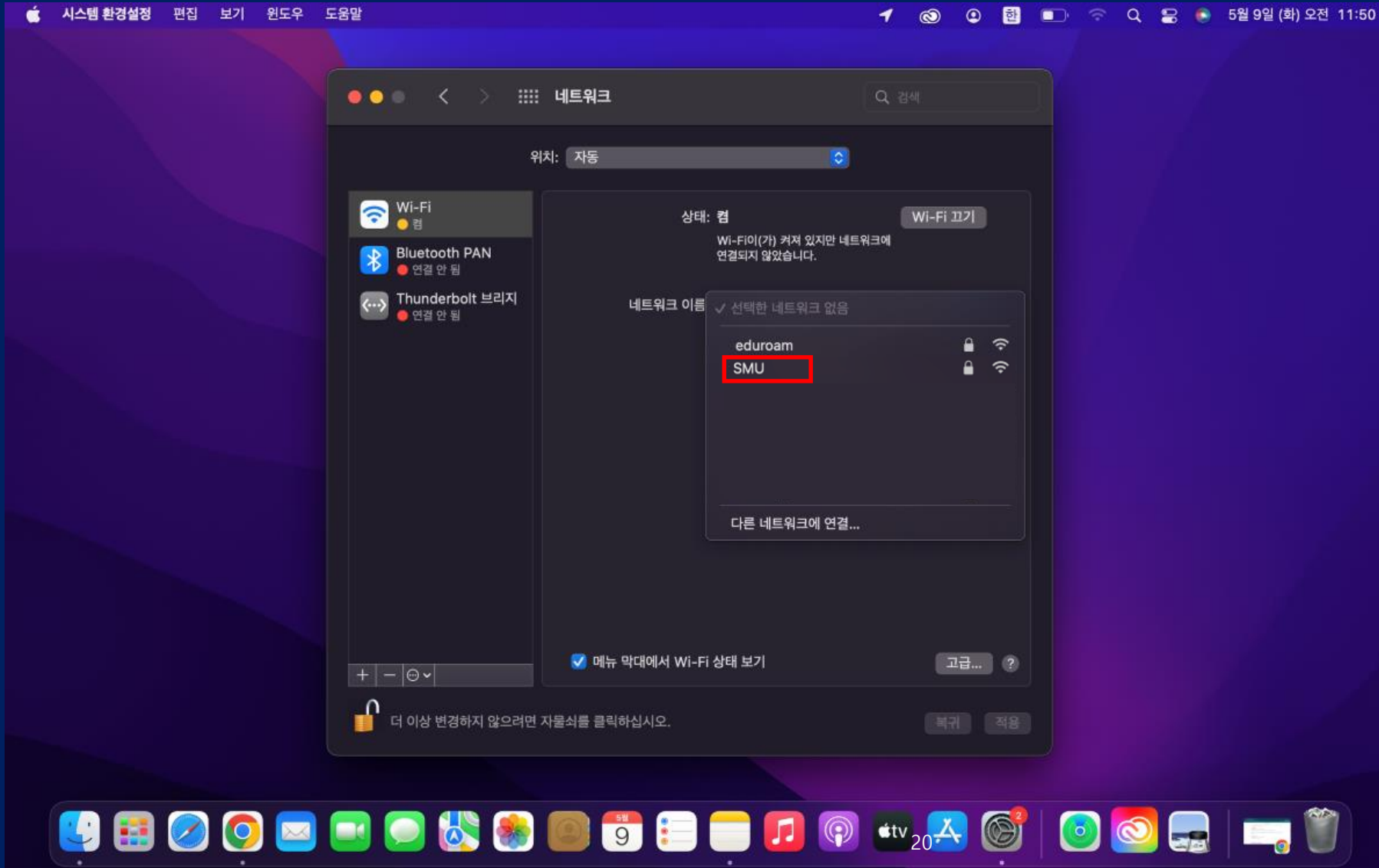


## 2) Wi-Fi 켜기





## 3) "SMU" 클릭

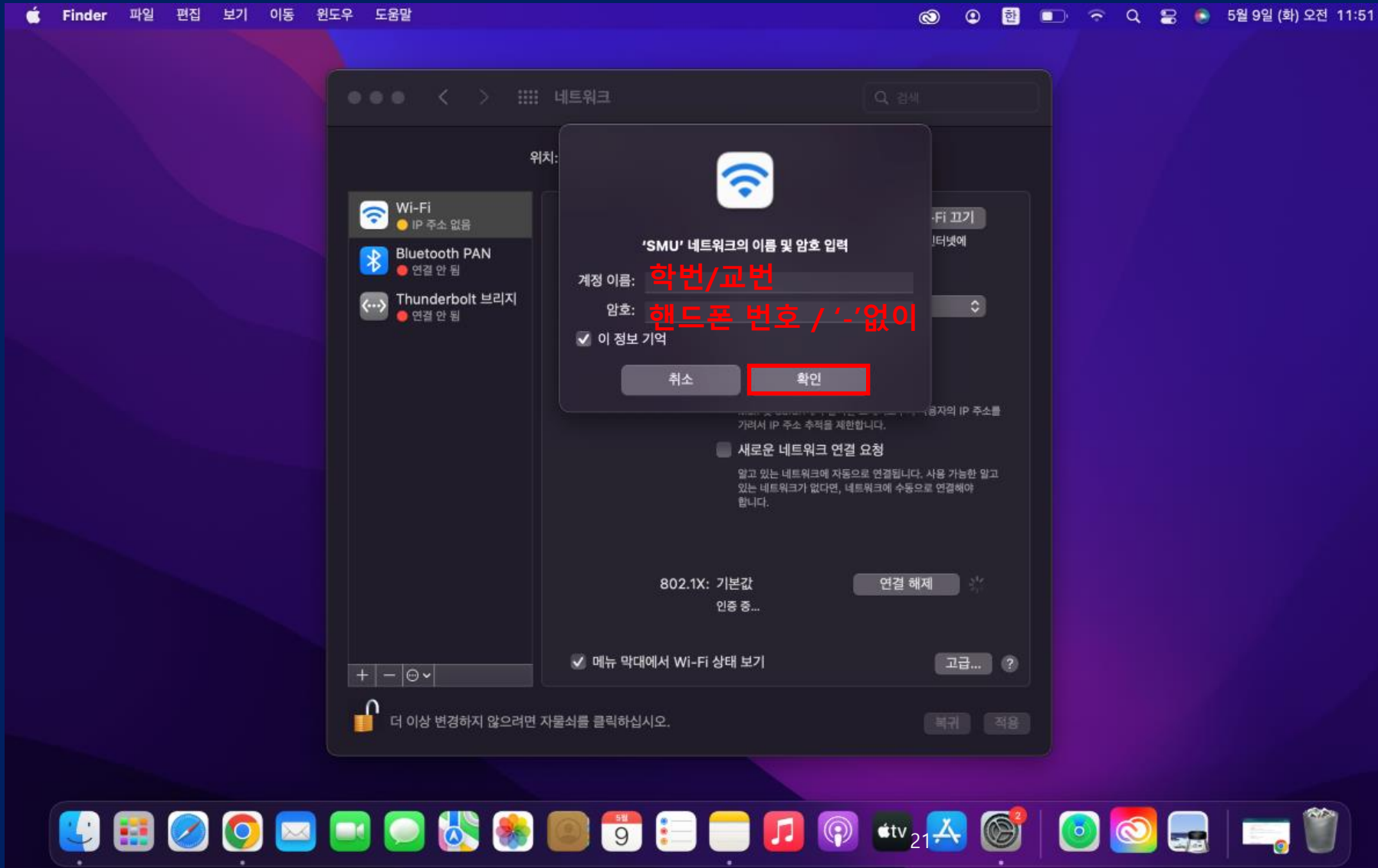






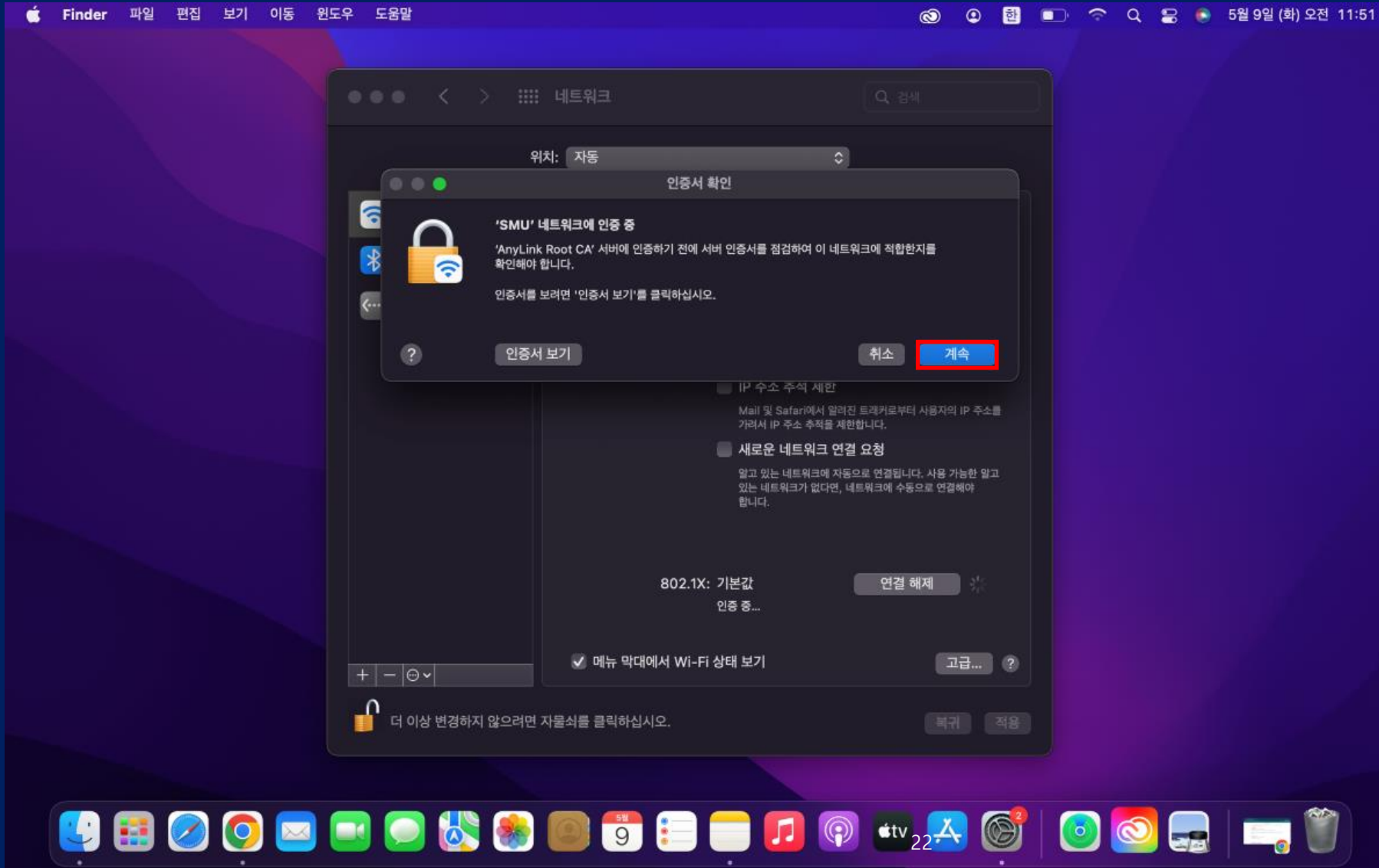
# SMU 사용방법 (MAC OS) - 4

## 4) 학번/교번 > 핸드폰 번호 > "확인" 클릭



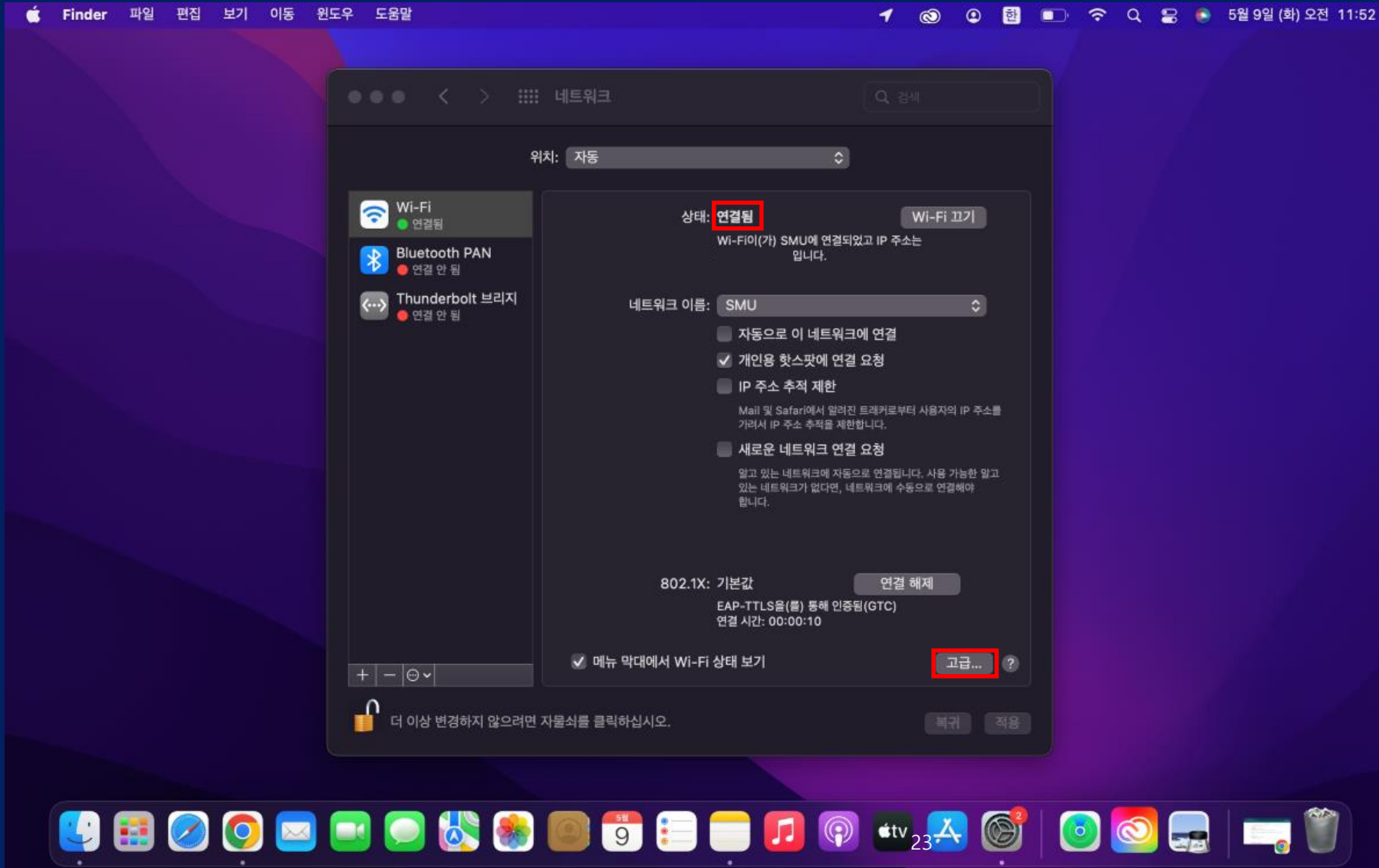


## 5) "계속" 클릭





## 6) “연결됨” 확인

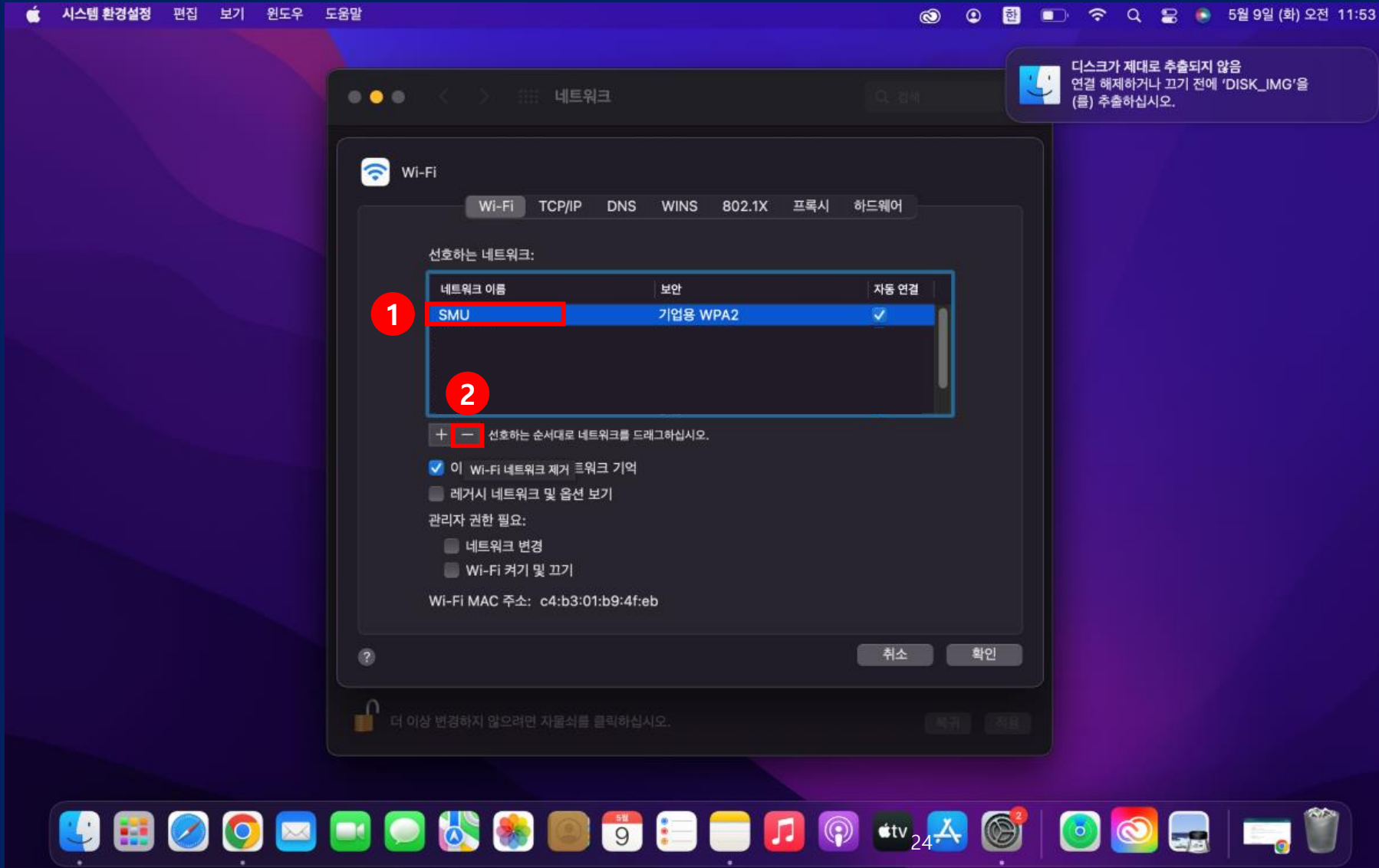




# SMU 사용방법 (MAC OS) - 7

사용이 원활하지 않을 경우

: “고급” 버튼 (이전 page 참조) > “SMU” 클릭 > “-” 클릭/삭제 후 1)부터 다시 시행

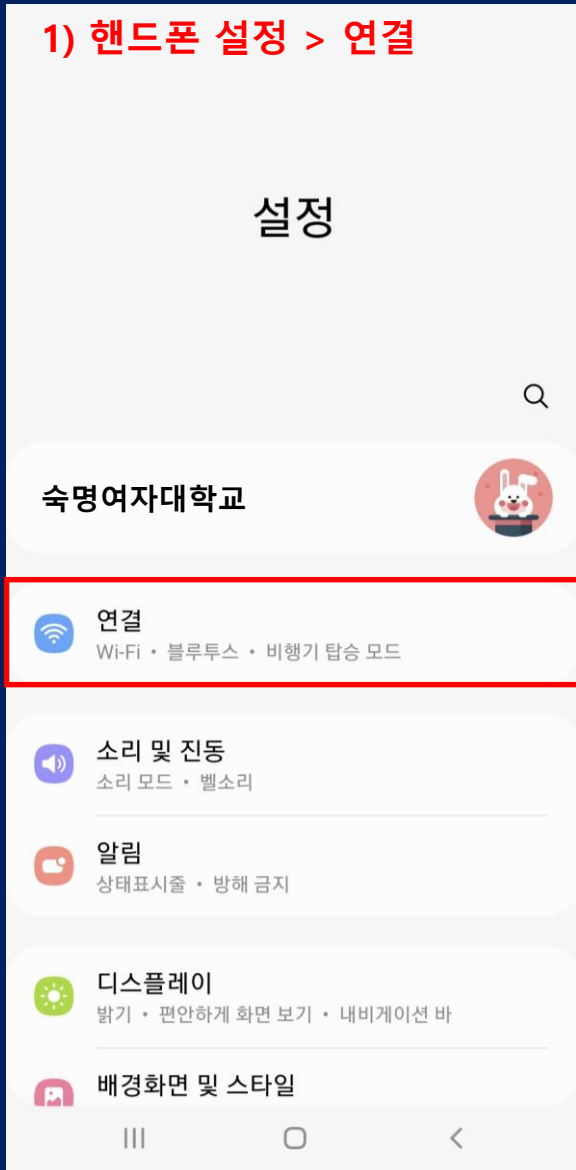


# 안드로이드(삼성) SMU 사용방법

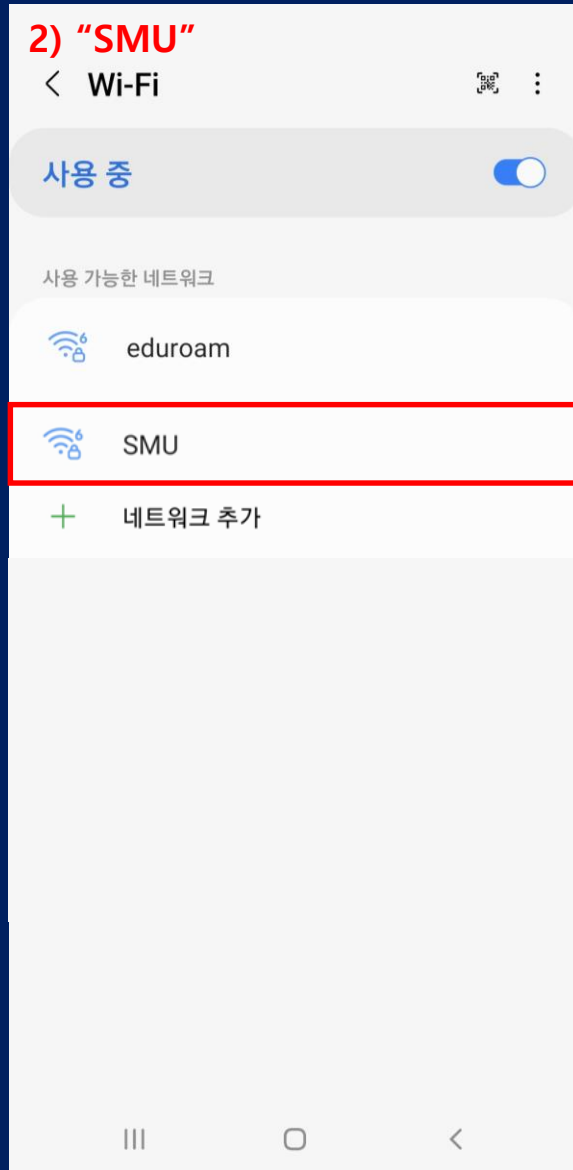


# SMU 사용방법 (안드로이드\_삼성)

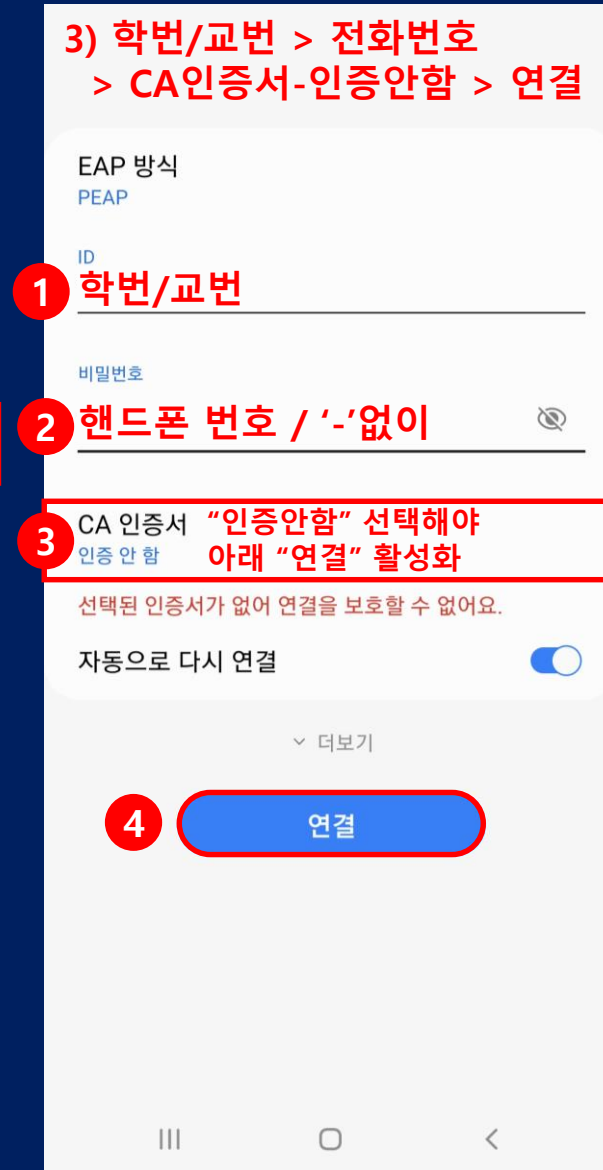
## 1) 핸드폰 설정 > 연결



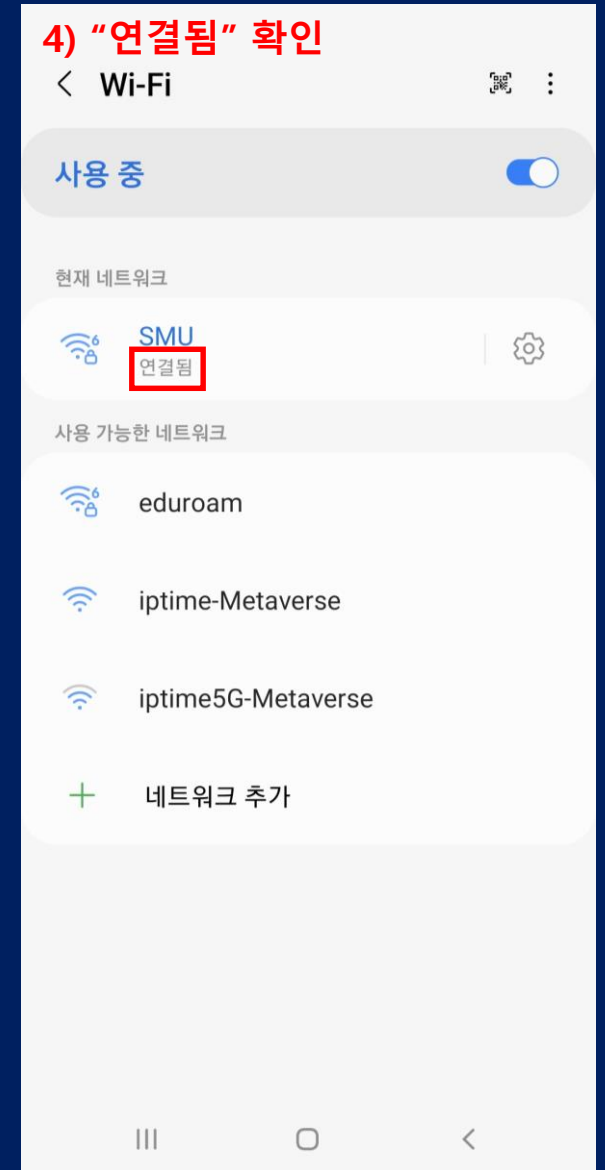
## 2) "SMU"



## 3) 학번/교번 > 전화번호 > CA인증서-인증안함 > 연결



## 4) "연결됨" 확인



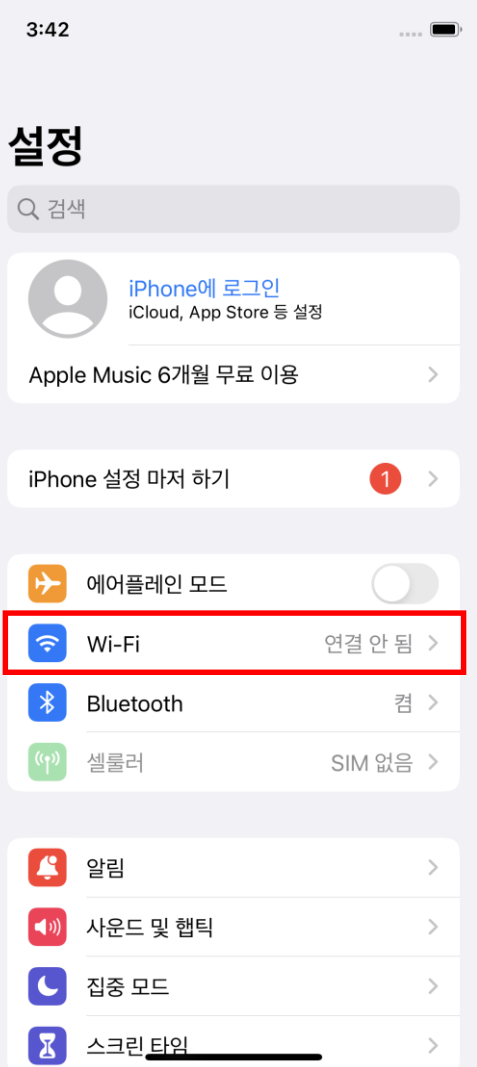


# 아이폰 (애플) SMU 사용방법



# SMU 사용방법 (아이폰\_애플)

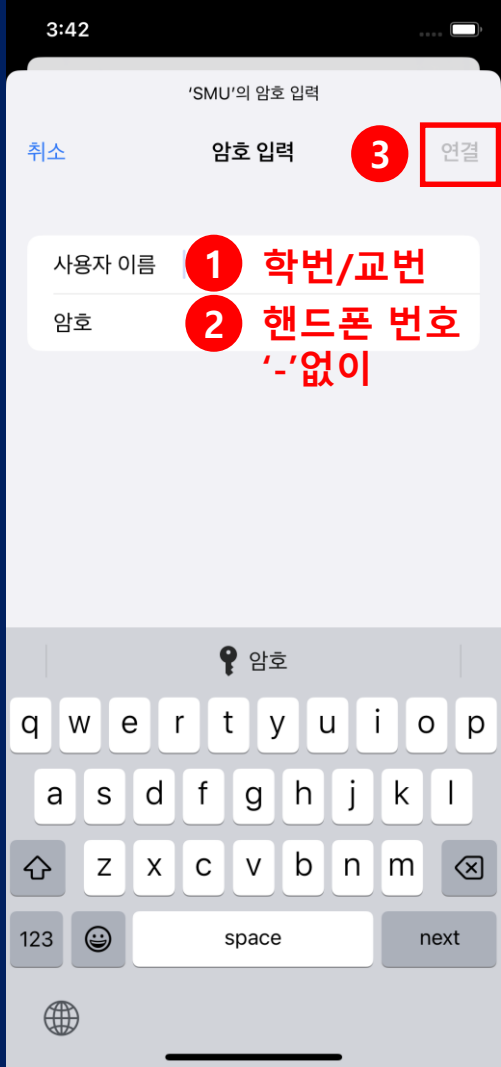
## 1) 핸드폰 설정 > "Wi-Fi"



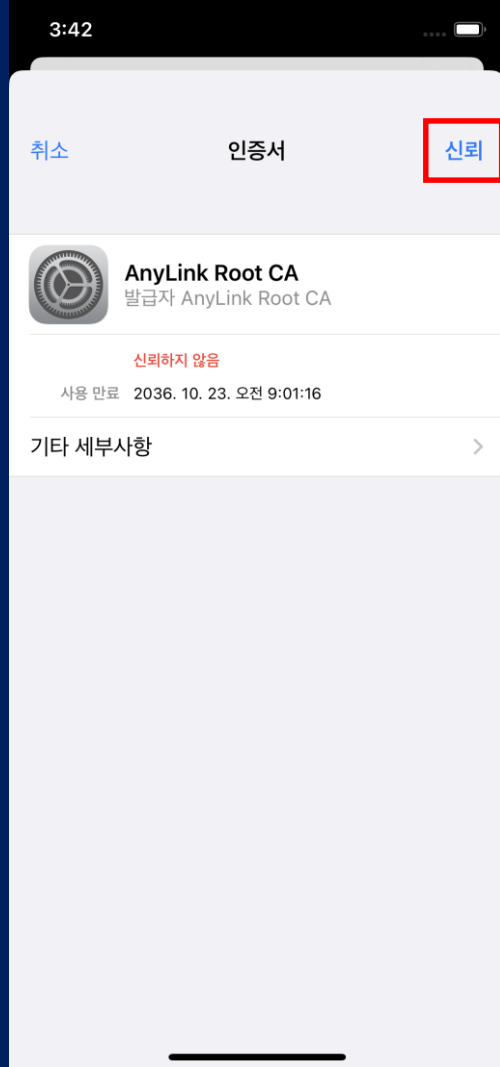
## 2) "SMU" 클릭



## 3) ID/PW입력 > "연결"



## 4) "신뢰" 클릭



## 5) 연결 확인

